
CONFERENCES AND MEETINGS



Cumberwell Park

The logo for Cumberwell Park features a large, stylized, light-colored letter 'C' with a decorative flourish. Below the 'C', the name 'Cumberwell Park' is written in a matching light-colored, elegant script font.

THE IDEAL VENUE

WE HAVE A NUMBER OF MEETING ROOMS INCORPORATING THE CHARM OF A TRADITIONAL WILTSHIRE BARN, BENEFITTING FROM NATURAL LIGHT AND FEATURE WINDOWS TO ACCOMMODATE SMALL OR LARGE GROUPS OF UP TO 150.

All of our Rates include the following:

- Hire of meeting room set up to your requirements
- Integrated audio visual equipment
- Free Wi-Fi
- Flip chart and pens
- Delegate note pad and pencil
- Bottled water
- Cordial and Sweets
- Free parking
- Morning Coffee with Danish Pastry and Afternoon Tea with cakes
(Half day rate includes one of these options)
- Lunch (Two courses for day delegate or Working Lunch)

We can supply additional equipment, such as lapel microphones, staging, flip charts, screens, TV/DVD, data projector or laptops. Please contact us for information and for menu options – we can tailor make your day.

Contact us for details – email events@cumberwellpark.com or call 01225 863322



OUR MEETING ROOMS

Room	Boardroom	U-Shape	Cabaret	Classroom	Theatre
Hayswood Our main room suitable for large meetings and seminars	40	38	80	70	150
Rushmead A versatile room for meetings or seminars	24	26	36	30	80
Farleigh Ideal as a syndicate or break out room to the adjoining Hayswood Room. Ideal for small meetings	24	N/A	N/A	20	40

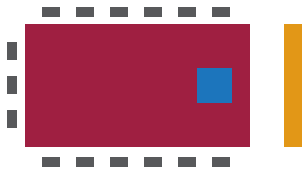
All our rooms are wheelchair accessible with the exception of the Farleigh Room due to two steps down into the room.



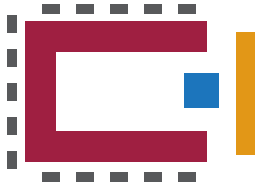
ROOM FORMATS

OUR CONFERENCE FACILITIES OFFER CONSIDERABLE FLEXIBILITY TO MEET EACH CLIENT'S REQUIREMENTS. HERE ARE SOME EXAMPLES OF LAYOUTS WHICH WE HOPE WILL ASSIST YOU IN PLANNING YOUR MEETING.

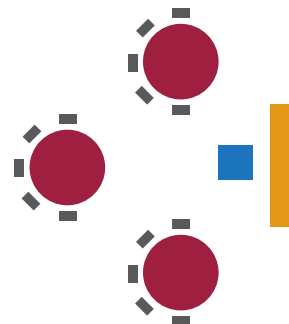
Boardroom



U-shape



Cabaret



Key

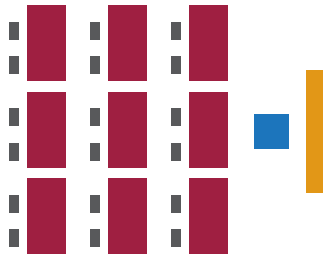
- Tables
- Chairs
- Screen
- Overhead projector or data projector

Audio Visual Equipment

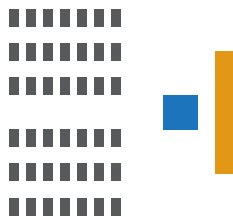
Any visual aids or equipment required may influence the layout and space available for delegates.

TO MEET YOUR NEEDS, WE OFFER STATE OF THE ART IT AND PROJECTION FACILITIES, ALONG WITH VARIOUS CATERING OPTIONS AND AMPLE FREE PARKING.

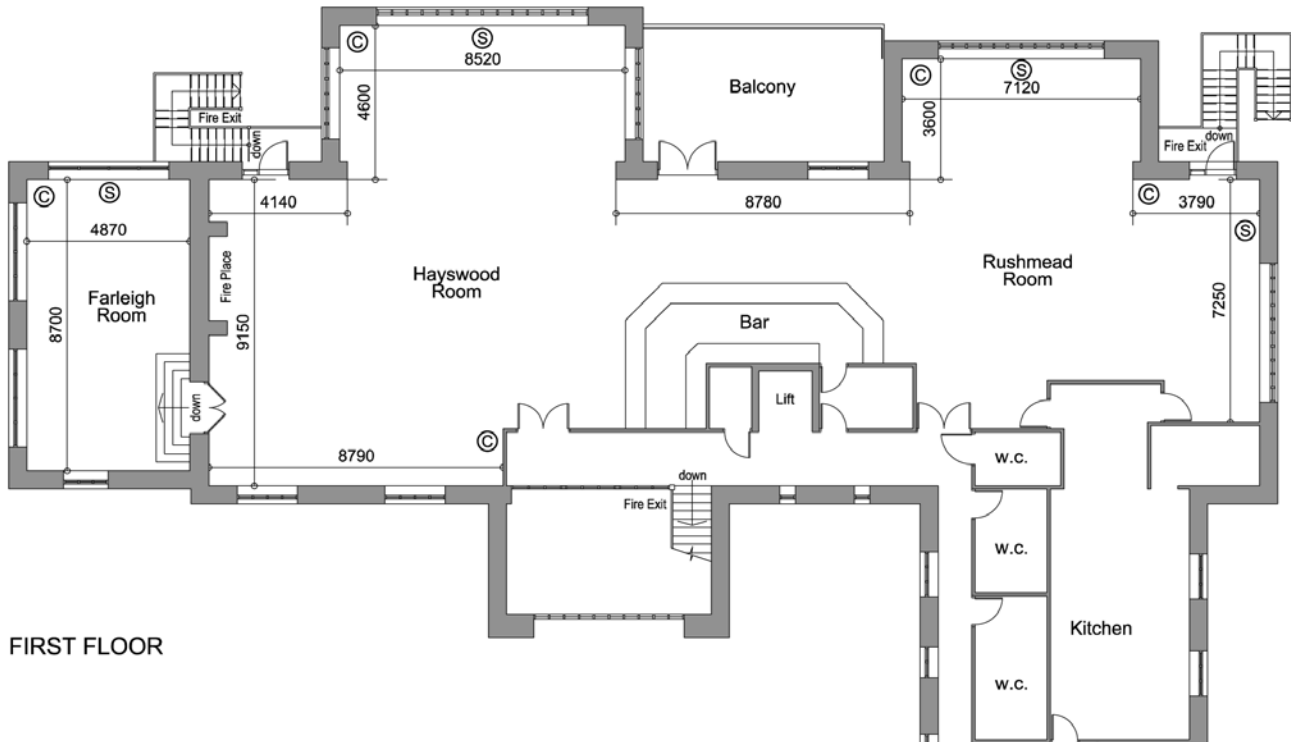
Classroom



Theatre





ROOM LAYOUT



FIRST FLOOR

 Window

 = Screen

 = AV Connections

Multiple power points & cables available

Measurements in cm

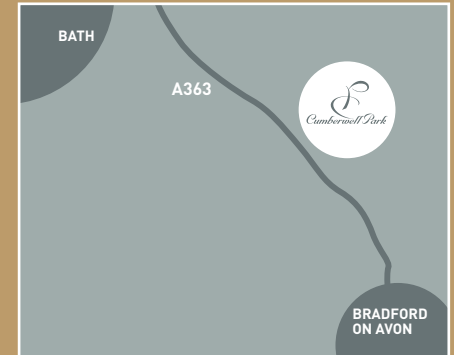
FURTHER INFORMATION

LOCATION

By road: We are located on the A363 on the outskirts of Bradford-on-Avon, just over 1 mile to the NW. The nearest motorway is the M4, junction 17 or 18.

By rail: Bradford-on-Avon railway station is 2 miles away.

By air: Helicopter landing on site is available, prior notice is required. The nearest International Airport is Bristol.



GOLF

Use of our 36-hole golf course or par 3 9-hole course can also be incorporated into the package for relaxation or networking. Lessons can also be arranged on the driving range or short game area. Ideal for a group team building event or post-meeting networking.





**GOLF
WEDDINGS
DINING & EVENTS
CONFERENCES & MEETINGS**

Cumberwell Park
Bradford-on-Avon
Wiltshire
BA15 2PQ
Tel: 01225 863322
www.cumberwellpark.com